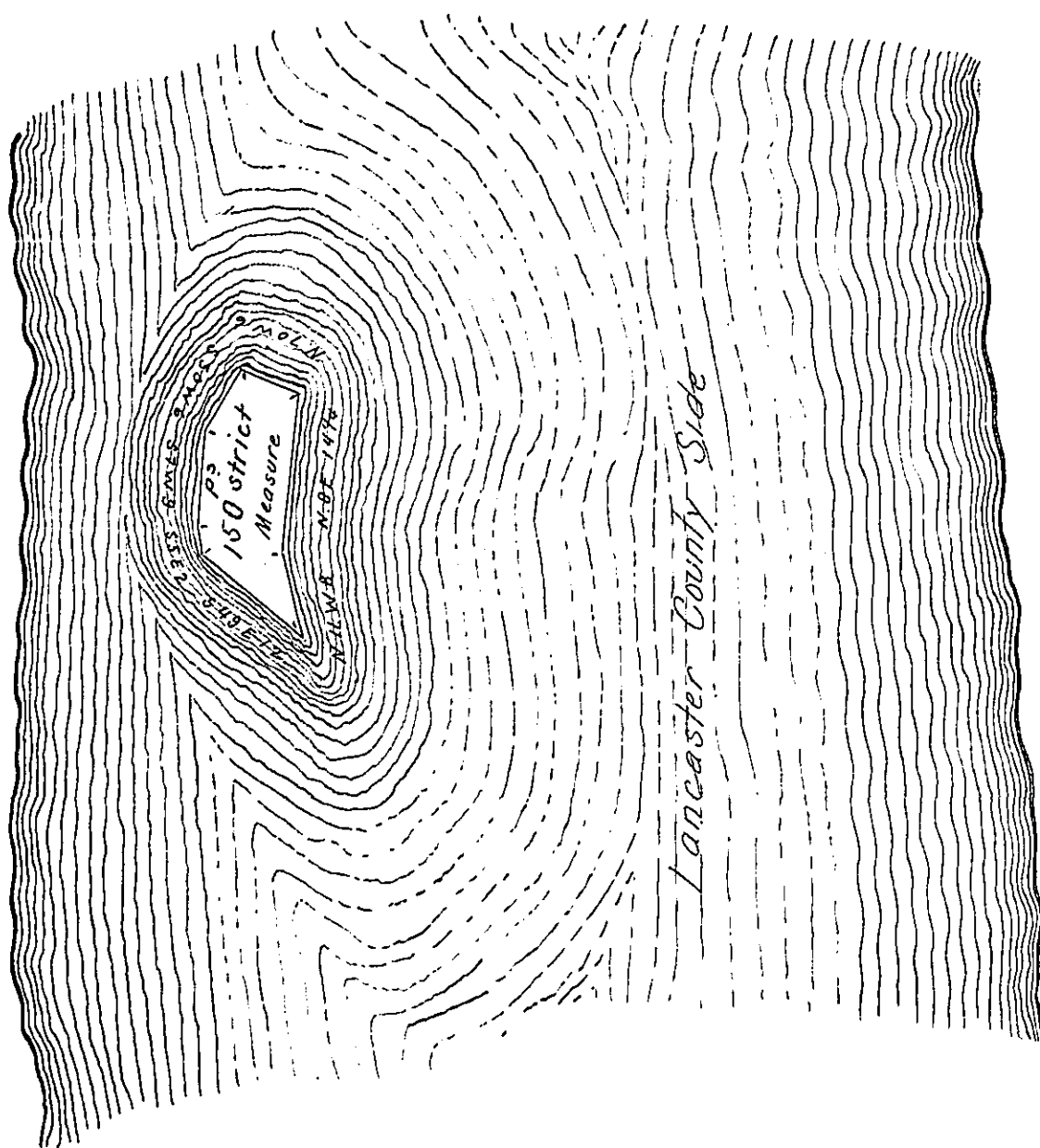


York County Shore.



A draught of an Island Situate in the River Susquehanna Donegal Township Lancaster County called Mistkat or toad Island opposite on the Lancaster County Side to John B. Haldeman and on the York County Side to the town of New Holland. about four perches East of Galbraith's Round Island and near thirty perches from Forge Island. Containing One hundred and fifty perches of land Strict Measure. Surveyed the 29th of July A.D. 1816. for Adam Wolf & others in pursuance of an Order from the Board of Property. And since by Warrant dated the 30th of October A.D. 1816. granted to Jonathan Hough. October 31st 1816.

*To Richard T. Leech Esq. } pr. Jacob Hibshman D.S.
Surveyor General*

IN TESTIMONY that the above is a copy of the original remaining on file in the Department of Internal Affairs of Pennsylvania, made conformably to an Act of Assembly approved the 16th day of February, 1833, I have hereunto set my Hand and caused the Seal of said Department to be affixed at Harrisburg, this tenth day of February 1905.

Jacob N. Brown
Secretary of Internal Affairs.